



ROTORUA
GIRLS
HIGH SCHOOL

every girl counts

MANAGEMENT POLICIES

2014 - 2017

STRUCTURE

The policies are grouped according to the following structure.

- A. **TEACHING AND LEARNING** – policies and procedures that govern curriculum, assessment, special programmes, education outside the classroom, timetable and programme evaluation.
- B. **STUDENT WELFARE** – policies and procedures that govern enrolment, student health, student leadership and student management.
- C. **PERSONNEL** – policies and procedures that govern employment, staff welfare, staff performance, staff management and staff safety.
- D. **RESOURCING** – policies and procedures that govern finance, property maintenance, special resources and records.
- E. **COMMUNITY LINKS** – policies and procedures that govern communication with the school community.



WITHIN EACH SECTION

SECTION A. TEACHING AND LEARNING

AO1.	Curriculum Policies and Procedures	Page 5
AO2.	Assessment and Student Data Policies and Procedures	Page 13
AO3.	Evaluation Policies and Procedures	Page 16
AO4.	Special Learning Needs Policies and Procedures	Page 17
AO5.	Treaty of Waitangi Policies and Procedures	Page 20
AO6.	Education Outside the Classroom Policies and Procedures	Page 21
AO7.	Co-curricular Policies and Procedures	Page 23
AO8.	Student Leadership Policies and Procedures	Page 25

SECTION B. STUDENT WELFARE

BO1.	Enrolment Policies and Procedures	Page 28
BO2.	Health Policies and Procedures	Page 30
BO3.	Safety Policies and Procedures	Page 35
BO4.	Student Management Policies and Procedures	Page 41

SECTION C. PERSONNEL

CO1.	Employment Policies and Procedures	Page 50
CO2.	Staff Welfare Policies and Procedures	Page 56
CO3.	Staff Performance Policies and Procedures	Page 61
CO4.	Staff Management Policies and Procedures	Page 63
CO5.	Staff Protection Policies and Procedures	Page 67

SECTION D. RESOURCING

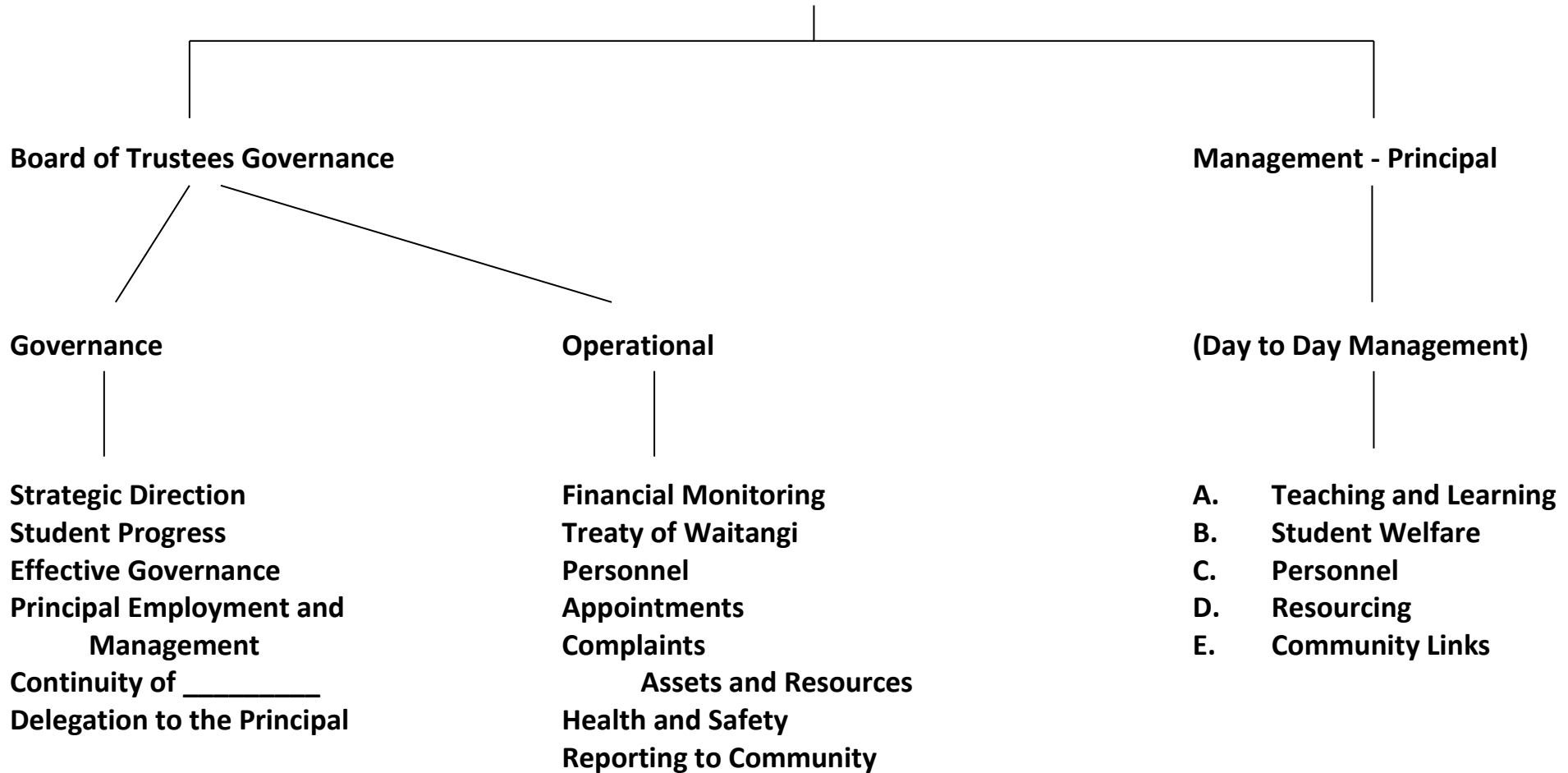
DO1.	Financial Policies and Procedures	Page 71
DO2.	Timetable Policies and Procedures	Page 76
DO3.	Property and Maintenance Policies and Procedures	Page 78
DO4.	Special Resources Policies and Procedures	Page 84

SECTION E. COMMUNITY LINKS

E01.	Community Partnership Policies and Procedures	Page 89
------	---	---------



School Policies



ROTORUA GIRLS HIGH SCHOOL

OUR VISION

Our Young women are leaders in the global Environment

OUR MISSION

To create a connected culture of Excellence

OUR VALUES

R - The willingness to learn: RESILIENCE
E - Engaging to achieve: INTEGRITY
A - Always shows respect: RESPECT
O - Offers to serve: EMPATHY

OUR PRINCIPLES

The foundations of our curriculum decision-making are:

- Innovate through personalised learning
- Engage through powerful partnership
- Inspire through deep challenge and inquiry

STRATEGIC PRIORITIES

1

All students are engaged in meaningful learning opportunities that develop connected critical thinkers

2

Inclusive and inspirational opportunities have meaning and approved pathways are maximised for all learners

3

All students and staff are supported emotionally, spiritually and physically

4

Community and Stakeholders are involved with the life of the school

5

The Strategic Plan is effectively resourced and implemented

Our teacher - student relationships are based on Culturally Responsive and Relational Pedagogy

Where power is **SHARED**
 - Learners have the right to **self-determination**.

Where **CULTURE COUNTS**
 - Learners bring who they are to their learning

Where learning is **interactive** and **dialogic**
 - Learners speak and listen

Where **connectedness** and **RELATIONSHIPS** are fundamental
 - Learners are valued

Where there is a **COMMON VISION**
 - Learners experience **Excellence** in Education

