

Issue  
#1  
2018

# Te Mātārere

*Rotorua Girls' High School*



Introducing our 2019  
Head Girl - **Atera Apirana** (left) and  
Deputy Head Girl – **Geraldine Atchico** (right)

---

## *Across the Principal's Desk*

---



Wednesday, 27 February 2019

Kia Ora and Welcome to 2019!

I would like to thank the Rotorua Girls' community for their kind welcome in January!

Our family has almost made the full transition from the South Island, we are in the process of sorting out permanent accommodation and reuniting the family with our pets who are in safe keeping with friends and family.

We are all excited to be back in the Bay, although the weather has been much hotter than we have been used to, we have loved the easy proximity to all the things that took time to travel to when we lived in the South.

I would like to thank everyone for taking time to introduce themselves to me, I have really enjoyed meeting our school community and am genuinely excited about this year ahead.

I am particularly impressed with how quickly our Year 9s have settled into learning. I know that this is in main part to the support and good role modelling from the senior students.

Term 1 is always particularly busy with events such as athletics and swimming sports. These occasions are always full of colour and energy and along with giving our champion athletes a chance to shine, provide a day for all to get out and be active. I know the Student Prefects have a number of activities organised for the term. For the new students, get out and get involved.

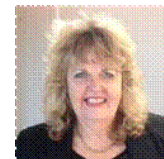
Term 1 is also the time where good study habits for the year are established. Please make sure you are on time for classes (particularly the start of the day), missing 5 or 10 minutes of class can mean unpacking learning for the period is particularly difficult. Please let the school know what we can do to assist you with any queries you may have about your daughter's learning. On the back of the newsletter are some contact information. Please be in touch for big or small things. Communication is always a key lever of success for anyone.

Nga mihi

Sarah Davis - Principal

---

## ***Student Support and Principal's Nominee Deputy Principal – Raewyn Krammer***



### **NZQA Fees – Due September 2019:**

These fees are collected at the school's accounts office on behalf of NZQA; they are for all internal and external credits. You will be advised by invoice as to how much you have to pay in NZQA fees. The last day for paying the fee at the school's accounts office is Thursday, 12 September 2019. Candidates who fail to pay the fee by this date will have to pay the fee directly to NZQA before the 1 December 2019. If paid after this date a \$50.00 late fee will be charged for NCEA and Scholarship fees.

You are most welcome to make weekly or fortnightly payments through the school so that by the time the fees are due in September your daughter's qualification fees are paid. If you are interested in doing this, please contact Ms Brenda Green at the accounts office.

### **Fees for Domestic Candidates:**

Enrolment	Fee
Any number of NZQA standards and up to 3 scholarship subjects	\$76.70 per candidate
Scholarship entries are now an additional cost as they are not included with your NCEA fee.	\$30.00 per paper

### **Fees for International Fee Paying Candidates:**

Enrolment	Fee
Any number of NZQA subjects	\$383.30 per candidate
Scholarship subjects (additional to NZQA fees)	\$102.20 per subject

### **Financial Assistance:**

Application forms for Financial Assistance are available from the school office. If you qualify for Financial Assistance please fill in the application form and hand it in at the school's account office with the fee of \$20.00 per individual or \$30.00 maximum per family by Thursday, 12 September 2019. For any further assistance or any queries please contact Mrs Raewyn Krammer (Principal's Nominee NZQA).

**NCEA Results (2019):**

CONGRATULATIONS to all our students who were successful in passing NCEA Level 1, 2 or 3 in 2018. For those students who did not pass, Level 1, 2 they will have further opportunity this year to pass when they complete this year level's credits. Those students going on to University or Tertiary study, we wish them every success in their new journey and look forward to hearing from them throughout their study.

We will publish the 2018 NCEA results in the next newsletter when the provisional results are finalised.

**Top Scholar/Young Scholar Evening:**

We will be celebrating the Top Scholar and Young Scholars on Wednesday, 13 March 2019 at 5.30 pm in the Nina Hogan Performing Arts Centre (PAC). Students receiving these awards will be notified by letter including an invitation to their parents to attend this function. Top Scholars are those students who gained an Excellence Endorsement in NCEA Level 1, or Level 2. Young Scholars are those students who have achieved at least 80% GPA in their NCEA results.

We look forward to celebrating your daughter's success with you on Wednesday, 13 March 2019.

**60<sup>th</sup> Diamond Jubilee:**

We are looking for any previous school uniform from over the last 60 years. We wish to display these uniforms during the 60<sup>th</sup> Diamond Jubilee that will be held during Easter this year.

If you have any uniform items that we could borrow for this event, please name them and deliver to the school office. We shall return these to you after the event.

---

***Teaching and Learning***  
***Deputy Principal – Aramoana Mohi-Maxwell***

---



Ki a kōutou kua hoki mai - nei ra te mihi, nau mai hoki mai!

The year has started and it has been filled with a number of activities that are designed to help us understand who we are as a school community and what connects us as learners and the relationships that will both strengthen and fortify our learning journeys in the years ahead.

We welcomed Sarah Davis and her whānau into the poho of our learning community and mihi to our Ngāti Whakaue and Tuhourangi kaikōrero who heralded the cultural framework that is an important component of Te Arawa tikanga. Raukura, our young

women and staff welcomed Mrs Sarah Davis and her whānau according to Te Arawa protocols and we now look ahead to this new learning journey.

Having the overview of Year 9 and 10 is an opportunity to strengthen relationships from the year before and build connections with our new Year 9 cohort. Whāea Trish Pike, Whāea Jaylene Tamati and Miss Morrison are a powerful team to work with and each of us are available to help if you need us. The Year 9 'Meet and Greet' was a great opportunity to meet whānau and I look forward to the many opportunities ahead. Athletics was a great revitaliser and Swimming Sports is another highlight that helps us make further connections to each other and our Houses - the chants are always a highlight!

The learning atmosphere across the classes is exciting and as a teacher, this means achieving goals that are designed with our learners.

Kua takoto te manuka. Werohia!!!

Whāea Aramoana

---

## ***2019 Senior School Leaders***

---

Congratulations to our 2019 Senior School Leaders

Position	Name
Head Girl	<b>Atera Apirana</b>
Deputy Head Girl	<b>Geraldine Atchico</b>
Academic Leader	<b>Kristia Paras</b>
Deputy Academic Leader	<b>Ayushi Kataria</b>
Arts Leader	<b>Sarah Atkinson</b>
Deputy Arts Leader	<b>Unique Rapana</b>
Sports Leader	<b>Wairua Lloyd</b>
Deputy Sports Leader	<b>Tenika Dudson</b>
Deputy Sports Leader	<b>Natalia Healey Forde</b>
Kohine Whakarae	<b>Tiana Jones</b>
Kohine Raukura	<b>Maia Kemp</b>
Pasifika Leader	<b>Azarya Aitupuna</b>
Student Council Leader	<b>Claudia Dain</b>
CATCH Leader	<b>Precious Bravo</b>
Makereti House Leader	<b>Aroha Rapana</b>



Makereti Deputy House Leader	<b>Amber Platten</b>
Makereti Deputy House Leader	<b>Savana Paul-Kite</b>
Taini House Leader	<b>Lize van Rensburg</b>
Taini Deputy House Leader	<b>Jasmine Hati</b>
Witarina House Leader	<b>Tiakiawa Reweti</b>
Witarina Deputy House Leader	<b>Mere Kemp</b>

A Senior Leaders Investiture Assembly will be held on Wednesday, 6 March at 10.20am in the ARENA.

---

## ***From Across the Desks of the Year Level Deans***

---



### **Year 13 – Sarah Riley**

#### **Prefects BBQ with RBHS**

As a way to strengthen the bonds between RGHS and RBHS, the 2019 Prefects met with each other for a BBQ and planning session. The students' were looking at events that they could plan together and future events that they could be involved in, and develop connections with their counterpart at RBHS. We look forward to seeing what events this will lead to.



## HeadzUp Leadership

Four of our senior leaders were chosen to participate in the HeadzUp leadership course, held at Waikato University. The day started with over 25 schools represented by 2-4 prefects. The students' filled the auditorium to listen to and speak with guest speakers, and previous head students. They shared their journey's of leadership, which was often a rocky one. After morning tea, the students' split off to hear Sir Edmond Hillary Scholars recipients talk about their journey before participating in a range of workshops, which explored leadership qualities.



## Year 12 – Ngaire Tepania

Tēnā kōutou katoa,

Our year has started and I am taking this opportunity to acknowledge all our students who achieved NCEA Level 1 in 2018 - you all worked with passion and pride - spurred on by the goals that you set and were supported by your teachers and whānau - me mihi, ka tika!

## Year 12 Senior Uniform

I am extremely impressed with how you are all wearing your new senior uniform. Each of you brings a sense of accomplishment and achievement to your Year 12 year which is reflected in the way you carry yourselves and the way you wear our uniform. It does not go unnoticed and I want to thank you - please maintain the high standards that you have set yourselves and let me know if there is anything I can do to help.

**Natalia Healey-Forde** and **Kiri Tepania** (photo) typify the standard of uniform that our Year 12 are showcasing around the school and in the community. **Natalia** and **Kiri** represented our school at the recent 'Zonta Club 100th Birthday Celebration Dinner' at the Princess Gate Hotel. These students worked with **Mrs Barbara Cumming** (a former Deputy Principal) to support various community organisations.



### Student Attendance

The goal is before us and as a year level cohort, raising our attendance rate is a key component of raising achievement. We are your partners in your learning journey and we need you alongside us. As tough as NCEA Level 1 was last year, we are all focused on achieving Level 2 plus all the wonderful opportunities available to us inside our school community.



For students to represent our school, we must maintain or better 85% for Sports, Cultural and Performance representation. We will celebrate your successes and each week, Year 12 students who have attended every class each week, go into the draw to be acknowledged with a reward for their full attendance.

### Student Pastoral and Learning Support

As your Year Level Dean and with Deputy Principal **Raewyn Krammer** who has the overview of Year 12, we are here to support students and whanau. Our Wellness Centre have a range of providers who are also available to help.

My email is [ntepania@rghs.school.nz](mailto:ntepania@rghs.school.nz) if you would like to contact me directly or at the school office 348 0156.



### Year 10 – Jaylene Tamati

Ka mihi kau atu ki a kōoutou katoa,

Our Year 10 students are well into their first inquiry for 2019. This Terms inquiry is all based around Health and Wellbeing. Our accelerate class 10 Ako, are working towards Level 1 History standard which requires them to look at source reliability and APA referencing.





10PONO attended the Brave Hearts Exhibition activities earlier in February. Feedback from students and staff highlighted the enthusiasm and growth in learning for this group of students.



Students were receptive to the activities provided and demonstrated future focused learning competencies that are an important aspect of learning in our school. Collaborative skills are developing - ka rawe kōtiro

mā!

Congratulations to all those students who participated in Athletics and Swimming Sports. Your participation and contribution on those two days was impressive. To those that won in the different events and to those that weren't successful . remember, "You are never a loser until you quit trying" Kia kaha tonu koutou.



Just a reminder that our RGHS year 10 2019 Facebook page is used often for notices. This page is also for Whanau to keep up to date with what is happening around our school. If you would like to be a member of our page then please send me a PM with an explanation about who you are and I will accept your request. This page is safe and it is monitored by myself and the staff of RGHS. It is really important that students refer to this page daily at this time so that you know where and when trials and trainings for the different codes will happen.

### Student Pastoral and Learning Support

As the year 10 Dean my role is to oversee Student Wellbeing and Academic Achievement. If you have any concerns throughout the year please contact me via email: [jтамati@rghs.school.nz](mailto:jtamati@rghs.school.nz) or phone: 07 3480156. Ms Wai Morrison ([wmorrison@rghs.school.nz](mailto:wmorrison@rghs.school.nz)) as the Head of Junior School and Whāea Aramoana ([amohi@rghs.school.nz](mailto:amohi@rghs.school.nz)) as Deputy Principal for our year level are also available to support our Year 10 cohort.



### Year 9 – Trish Pike

#### TERM 1: “Mentoring Program in Action”.

Peer Support week was a massive success this year! Our year 13 leaders did a brilliant job. Our year nines attended a range of workshops and other fun learning activities, aimed at establishing Positive Behaviour for Learning across the four corner stone of our school curriculum.

Our seniors created and implemented a range of workshops:

- Relationship building
- Communications class expectations
- Values, Culture and Diversity
- Friendships

#### Meet the Parents BBQ:

Wonderful to meet some of our year 9 whanau. It was truly magnificent to see parents and guardians taking time to come in and get to know their daughter’s kahui whanau teachers. Parents also got to see a wide range of extra-curricular activities on offer and have rich discussion with daughters wanting to sign on. We commend our seniors during this event once again, for their time and commitment.

With support from our Sports Leaders on standby, there was no questions left unanswered. We had very happy parents at the end of the night.





### Athletics

Was a BLAST! Fantastic to see some amazing athletes in our year 9 cohort this year.

With majority of juniors participating, contributing and building positive relationships, house spirits and overall morale was high in general.

### Swimming Sports:

A fabulous day spent in the Sun! Wonderful organisation by Mrs Holt, her team of sports leaders did a wonderful job putting together a day full of Championships & Non-championship events. High lights included, poolside dance offs, ALL in the pool DIP & best of all inter house CHANTS competition. Makereti lead the performances in harmony. Taini House followed with their marvellous performance. In the end, WITARINA takes out the chant competition with their heart-felt PI performance combined with 'Mariah Carey' flavour.



### Swimming Sports 2019 |



### Positive Behaviour for Learning

What does learning look like in our year 9 Kahui Classrooms? Well, this picture says it all. With our Junior 'Health & Wellbeing' Inquiry projects well underway, 9 Awahi leads by example, modelling our school TEAO values in action.

An engaged learner, is inspired, motivated and always ready to learn. With strong support from two kahui teachers in each class, and expert teachers delivering skills workshops in a range of curriculum areas, we have no doubt our girls will discover their full potential in no time.

At RGHS we ensure that we cater to the individual need. Our holistic teaching and learning approaches in the classroom, ensures that 'Excellence & Equity' is addressed fairly.



## Learning Areas

### Art & Technology

The Art and Technology Learning area have had a great introduction to 2019. Some promising drawings have been created by students in Art and Year 11 Visual Arts are making masks for our production of "A Midsummer Night's Dream". Fashion has been working on some upcycling projects already as well as starting the costuming for "A Midsummer Night's Dream".



Year 10 Fashion have been trialling cutting techniques and machine sewing techniques to create a patchwork cushion.

Food Technology have been working on timing of cooking and food safety practices. Year 13 Hospitality have started their Barista training. In Digital Technology some new Achievement Standards have been introduced at Level 1, ensuring a high level of success! We have also had fun working on house banners this last week.



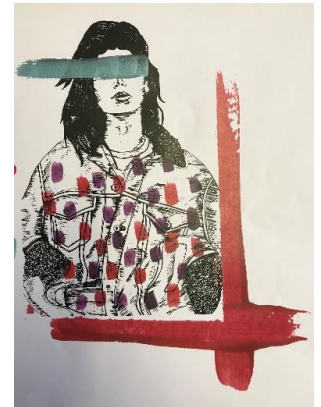
Attendance and being on time are our priorities at the start of the year. In our subjects, we do a lot of demonstrating techniques. Those students who hear and witness the demonstrations for each lesson have the highest chance of achievement.

The wonderful, collaborative teachers in our department include **Miss Tash Bol**, teaching Art Photography and Art Design. She is new to RGHS and we welcome her to our D Block department. She replaces **Mrs Bryony Edwards**. **Miss Kate Townsley**, teaching Fashion and Food Technology; **Miss Felicity Kawai** teaching Digital Technology; **Mrs Jo Carson**, teaching Food Technology and **Mrs Carolyn Compton** teaching Painting.

Year 13 Design has started the year with Drawing Illustration - a hand drawn picture and washes that have then been experimented with using Adobe Photoshop and Illustrator.

Kararaina is in Miss Tash Bol's class.

**Kararaina Pene** (right) Year 13 Design.



Year 12 Food students are learning about nutrition and made these biscuits with Wholegrain Oats and had a topping of fruit salsa and ricotta.

A bit of a twist from just a plain old biscuit, and they tasted scrumptious.



**Carolyn Compton**

Head of the Art and Technology Faculty

## Humanities

### Social Studies:

Currently in Social Studies, our junior students are looking at human rights and how this aligns with their inquiry on Health and Well-being. Basic Social Studies skills such as correctly referencing and identifying reliable sources is currently being taught.

### Classical Studies

Students will study of ancient Greek and Roman societies through literature and art. At Year 12 students will study Greek Mythology, The Odyssey, Pompeii and Roman Social Life. At Year 13 students will study Aristophanes' Plays, Roman Religion and Greek Vase Painting.

### **History**

This subject looks at events and issues in the past and how people choose to remember them. In Year 11 students study the Black Civil Rights and NZ Women and Health. In Year 12 students will study the Russian Revolution, Origins of WW1, Vietnam and the Cold War and at Year 13

### **Senior Social Studies (Sociology)**

Students in this course are currently his carries on from Social Studies and looks at Societies and human social behaviour. Our Year 11 students have just completed their first unit standard on “class systems” in New Zealand. Year 12 are about to complete their study on the age structure in New Zealand compared to Uganda. Year 13s have begun their study into Religious Fundamentalism in the Middle East and USA.

### **Tourism**

Tourism studies the travel industry and patterns and trends. At the end of each year students will achieve the National Certificate in Tourism. Students will study various countries, tourist destinations and have the opportunities to visit some of our local tourist ventures. Recently our Year 12s and 13s visited popular Tourist venues around Rotorua

## **Humanities Faculty Events**

### **Model United Nations Association:**

Every year we participate in the Model United Nations. Schools from around the Bay Of Plenty compete as delegates to the United Nations. They are given a country and as a group must work together to address issues of global concern. We will notify students when this comes up.

### **Asia Wise**

Every year we compete in this international research competition. Students have a week to research answers on a range of questions based in the Asia Pacific region. All junior students are encouraged to enter as the competition is renowned throughout Australia and New Zealand. We will notify students when this event draws near.

### **EOTC:**

We try to offer a variety of field trips every year. This year students' in the faculty will experience trips to the Rotorua Museum, Tarawera Mountain, White Island and a History trip to Auckland. We also visit many of the Tourism adventures within Rotorua.

### **Wai Morrison**

Head of Humanities Faculty

## Mathematics & Statistics

This year marks the start of great change at Rotorua Girls' High School with **Sarah Davis** as the new principal and a curriculum review currently underway. In addition, the Mathematics Department also had a change in leadership with **Christopher Niles** taking over this year for **Yvette Nelson** who retired after more than 40 years of service in New Zealand Education. We wish her well and many thanks for her service at Girls' High not only in the Mathematics Department but as a timetabler.

**Christopher Niles**, who was originally born and raised in New York City, comes from Auckland where he spent the last seven years teaching Mathematics and Statistics at Epsom Girls Grammar School; leading professional learning groups of teachers as part of the Community of Learning in Auckland Central; and completing his Masters Degree in Education. **Christopher** is excited to be a part of this community and hopes to achieve great things through the mathematics department so that students may excel in mathematics and be well-equipped for life beyond state schooling.

2019 is off to a great start and as we continue this year, it is important for students to remember that they can succeed in mathematics and that there is no such thing as a "maths brain". Self-belief is a potential predictor of how successful students will be in mathematics. Messages about mathematics from home, friends and elsewhere can either help or hurt student self-belief. When students believe that they can do well in mathematics and work hard through practice and persistence, they can thrive and excel in mathematics.

It is important that students are given positive messages about mathematics and reminded to keep working hard so that they can achieve their highest potential.

The mathematics department welcomes whānau who want to know more about how they can support their daughters in mathematics education or provide us with ideas about how we might help to contact us.

**Chris Niles**

Head of Mathematics Faculty

## Physical Education

Welcome to all Physical Education, Health, Dance and Music students. We are excited about the year ahead and looking forward to working with you.

Faculty Members:

**Carolyn Katu** - Curriculum Leader - [ckatu@rghs.school.nz](mailto:ckatu@rghs.school.nz)

**Caroline Beamish** - Assistant Curriculum Leader - [cbeamish@rghs.school.nz](mailto:cbeamish@rghs.school.nz)

Teachers: **Puarito Jennings** - [pjennings@rghs.school.nz](mailto:pjennings@rghs.school.nz), **Jade Fleming** -

[jfleming@rghs.school.nz](mailto:jfleming@rghs.school.nz), ; **Geraldine Cunningham** - [gcunningham@rghs.school.nz](mailto:gcunningham@rghs.school.nz)

and **Kylie Hill** - [khill@rghs.school.nz](mailto:khill@rghs.school.nz). **Janaye Biddle-Kite** - Teacher in Charge of

Dance - [jbiddle@rghs.school.nz](mailto:jbiddle@rghs.school.nz); **Laura Falconer** - Teacher in Charge of Music -

[lfalconer@rghs.school.nz](mailto:lfalconer@rghs.school.nz)

### Physical Education Scholarship 2018

We congratulate **Te Ao Leach** who was the recipient of a Level 3 NZQA Scholarship in Physical Education. Her topic was looking at what impact kapa haka has on wellbeing and how this can have positive outcomes within Maori Communities.

Congratulations also to **Miss Fleming** who facilitated this with **Te Ao**. **Te Ao's** topic is a great example of writing about something that you are passionate about.



### Physical Education uniform.

The uniform for PE is a Blue RGHS shirt and shorts available from NZ Uniform. Please ensure that all Year 9's and 10's have this as soon as possible.

### WORK BOOKS

We have purchased workbooks from ABA resources for the following groups. All books can be paid for from the Main Office at RGHS. They will only be available until the 8th March.

Please talk to your daughters teacher if there is a problem paying for the workbook before the date.

Year 9 (All) - Body Care and Physical Safety - \$7.50

Year 10 Sports Performance - \$8.00

Year 11 Physical Education - Level 1 NCEA book - \$22

Year 12 Physical Education - Level 2 NCEA book - \$22

### YEAR 13 POLICE STUDIES

Police Studies got underway with a two day noho marae at Waiatuhi Marae on Thursday 7th and Friday 8th of February. Students from RGHS and RBHS joined together to participate in two days of learning about the Police and the PRIMED values.





We also did Adventure Based Learning activities, some physical training and all students went through the Solemn Undertaking where they each received their Police pin from Rotorua Area Commander, Inspector **Anaru Pewhairangi**.

### **EXCITING OPPORTUNITIES AHEAD**

I am thankful to our hardworking staff who are designing and planning exciting opportunities for our PE students. There are lots of trips ahead that will enable students to have wonderful experiences, that will enrich their responses to their assessment questions. Check out what's in store below. Please contact the teachers involved if you have any questions.

### **YEAR 9 NEWS**

The Year 9 classes are all working towards their duathlon (2.4km run and 400m swim), which will take place at the Blue Lake on the final day of their Noho Marae. To prepare for the duathlon, they will engage in 2 run/swim sessions in weeks 7 and 8. The cost of these sessions are \$6.00, which needs to be paid to the front office before their first swim session. The dates and times of the sessions will be sent home in a letter and posted to the Year 9 Facebook page.

We realise that some of our students are finding this a big challenge, however, it's only when we step out of our comfort zone that we GROW. KIA KAHA KOTIRO MA. Teachers involved - Mrs Katu, Mrs Jennings, Mrs Cunningham and Miss Hill.



### **YEAR 9 HAUORA ROTATION**

This is a 7 week rotation that all Year 9 classes will participate in, with Mrs Katu. Currently 9 Awahi are doing Hauora and should have brought a letter home.

Topics for the rotation include

1. Preparing the road for the sexuality journey - What is sexuality?
2. Safe and unsafe relationships
3. Diversity - Different sexualities
4. Speaking Up - Seeking help and Assertive Communication
5. Being Responsible Online and with Alcohol
6. Sex and Reproduction - conception and pregnancy
7. Making Sex Safer - Contraception

We take a positive view of sexuality and encourage and promote healthy sexuality views.

Sexuality Education is a compulsory part of Health Education. It is important that we get your feedback and I welcome you to email me at anytime should you wish to comment on what we do (or don't) teach in our sexuality programme. If you believe we should be teaching a particular topic not mentioned above, I would value that feedback

#### **YEAR 10 NEWS**

The Year 10 classes will be taking a step up from last year's duathlon to engage in a Triathlon this year. Stay tuned for more information about run/swim and bike sessions coming up in preparation. If anyone has any spare bikes at home that they would be able to lend or give to us, please contact **Mrs Katu**.

#### **YEAR 11 NEWS**

The Year 11's will be embarking on a two day surf adventure at Mt Maunganui on Wednesday 13th and Thursday 14th of March with O'Neil Surf Academy. The cost of the trip is \$40 and needs to be paid to the front office by Wednesday 6th March. This is a very reasonable price for two days of surf experience. Teachers in charge are **Mrs Katu** and **Mrs Beamish**.

#### **YEAR 12 NEWS**

Our Year 12 students, alongside their teachers **Mrs Beamish** and **Mrs Jennings**, will be undertaking an overnight tramp to Hot Water Beach campsite at Lake Tarawera. We encourage students to practice putting up their tents to check their suitability.

#### **YEAR 13'S**

Our Year 13 students are currently participating in swimming lessons as part of their unit on Snorkeling. This will culminate in a two day trip to Goat Island, which is north of Auckland. Teacher in Charge - **Miss Fleming**.

MAURIORA - Mrs Katu, Curriculum Leader.



## ***Board of Trustees News***

The following are our current BOT members:

Mr Chris Nairn	(Parent Rep - Chairperson)
Ms Mercia Yates	(Parent Rep – Deputy Chairperson)
Mr Herman Jansonius	(Co-opted)
Mrs Sharlene Easthope-Harper	(Parent Rep)
Mrs Leonie Kiff	(Parent Rep)
Mrs Sarah Davis	(Principal)
Ms Sarah Riley	(Staff Rep)
Joelle Paki	(Student Rep)

BOT meetings for this year will be held at 5.15pm on the following days:

5 March	2 April	7 May
28 May - BOT AGM @ 7pm	18 June	2 July
6 August	3 September	15 October
12 November	10 December	

NZSTA are preparing for the upcoming Triennial BoT Elections. They would like to encourage parent and whanau participation on school boards in order to help shape and support the education of their children.

To this end, NZSTA will be rolling out the Korari Programme for anyone interested in finding out about standing for the school board elections and having a say in the education of their children. Below are the following resources they would like to share in the school communities. These are also available on our website.

1. Korari: a programme that provides you with governance training to help you understand the role of school boards of trustees.

We will be rolling out information sessions for Korari in Terms 1 and 2.

2. Korari Form: NZSTA will support anyone who advises us they are interested in becoming a trustee, by way of the workshops but also providing access to our Learning Management System where online modules re. school governance, student achievement etc. can be completed.
3. Attached is a form for completion which can be emailed to [korari@nzsta.org.nz](mailto:korari@nzsta.org.nz)
4. Community member guide to the role of the board of trustees: This explains a lot of commonly asked questions and information about becoming a trustee.



## Kōrari

“Kōrari really helped me understand what it’s like to be a school trustee”



Kōrari - a programme that provides you with governance training to help you understand the role of school boards of trustees.

---

For more information contact us on 0800 782 435.



New Zealand School Trustees Association  
Te Whakaroputanga Kaitiaki Kura O Aotearoa



## Kōrari programme



### About NZSTA

We're a national organisation representing the interests of school board trustees. Our other role is to support trustees along their trustee journey by giving them up-to-date information, resources and advice. We advocate for our members' needs and interests in all relevant education related decisions and in national policy formulation. Our membership is open to boards of trustees of any New Zealand state, State Integrated or Partnership School | Kura Hourua.

### Your details

Please complete the form and email it to [korari@nzsta.org.nz](mailto:korari@nzsta.org.nz).

School name

School number

First name

Last name

Email address

Mobile phone

Which trustee role are you interested in the future?

Staff trustee ☐ Trustee ☐ Principal ☐ Student trustee ☐

### Privacy statement

We collect personal information from you, including your:

- Name
- Contact information (email address, phone number)

We collect your personal information in order to:

- Support you as an aspiring school trustee, school trustee or past trustee.
- Deliver online training in becoming a school trustee, during your time as a trustee or as a past trustee.
- Communicate with you during your journey as an aspiring trustee, school trustee or as a past trustee.

Providing some information is optional. If you choose not to enter name and email, we'll be unable to provide the services listed.

We keep your information safe by storing it in encrypted databases and only allowing NZSTA staff to access this for the purposes of carrying out their nominated jobs. You have the right to ask for a copy of any personal information we hold about you, and to ask for it to be corrected if you think it is wrong. If you'd like to ask for a copy of your information, or to have it corrected, please contact us 0800 782 435.



[nzsta.org.nz](http://nzsta.org.nz)

[facebook.com/NZSTA1](https://facebook.com/NZSTA1)

[twitter.com/NZSchoolTrustee](https://twitter.com/NZSchoolTrustee)

New Zealand School Trustees Association  
Te Whakaroputanga Kaitiaki Kura O Aotearoa

Level 8 – 142 Lambton Quay, Wellington  
PO Box 5123  
Wellington  
New Zealand

Phone: +64 4 473 4955 or 0800 782 435  
Fax: +64 4 473 4706



## Community member guide to the role of the board of trustees



**New Zealand School Trustees Association**  
Te Whakaroputanga Kaitiaki Kura O Aotearoa

## What is a School Board of Trustees?

School boards are responsible for the school | kura's performance and ensuring that all legal requirements are met.

Every state and state-integrated school | kura in New Zealand has a board of trustees. The board of trustees is a crown entity – that is an organisation that is part of the New Zealand public sector.

### The board

- is accountable for student achievement
- sets the vision for the school | kura
- ensures the school | kura complies with legal and policy requirements

**First and foremost a board is accountable for student progress and achievement to its parents, community and the Crown.**

### What do trustees do?

First and foremost a board is accountable for student progress and achievement to its parents, community and the Crown. The board has the overall responsibility and accountability for the school | kura. The legal responsibilities of boards of trustees are determined by the Education Act of 1989. Schedule 6 of the Act outlines the functions and powers of boards:

- 4 (1) A board is the governing body of its school.  
(2) A board is responsible for the governance of the school, including setting the policies by which the school is to be controlled and managed.
- 5 (1) A board's primary objective in governing the school is to ensure that every student at the school is able to attain his or her highest possible standard in educational achievement.  
(2) To meet the primary objective, the board must—  
(a) ensure that the school—  
(i) is a physically and emotionally safe place for all students and staff; and  
(ii) is inclusive of and caters for students with differing needs.

#### Here are some of the specific things boards do:

- Set the strategic direction and long-term plans for the school | kura in consultation with the school | kura's community.
- Monitor the board's progress against its strategic goals and targets.
- Monitor and evaluate student progress and achievement.
- Oversee the management of staff, property, finances, curriculum and administration.
- Ensure that government priorities are met.
- Fulfil the intent of the Treaty of Waitangi by valuing and reflecting New Zealand's dual cultural heritage.

2

- Appoint and support the principal and assess their performance.
- Act as good employers to all staff at the school | kura

### What skills do trustees need?

Trustees are active leaders in their school | kura and need to work well in a team, ask challenging questions and have good communication skills. Boards need a balance of skills and experiences to ensure effective processes for consultation, planning, monitoring, reporting and reviewing the school | kura's performance are in place.

### Who can become a trustee?

Parents, caregivers and people from the wider community can be nominated for election to a school board | kura. Your school | kura will be happy to help you find out more about standing for election or nominating someone else.

### How do I become a trustee?

Contact your school | kura if you are interested in becoming a school trustee. There are a variety of ways this can be achieved. If you want to find out about standing for election, nominating someone else and voting in the election - they will be happy to help. For more information visit: <http://www.nzsta.org.nz>

### Who is on a board of trustees?

The Education Act 1989 specifies the makeup of the board but provides some discretion for the board in determining its total size. This flexibility helps the board ensure its membership reflects the diversity of the community and the skills required for effective governance. There are a number of ways diversity can be reflected.

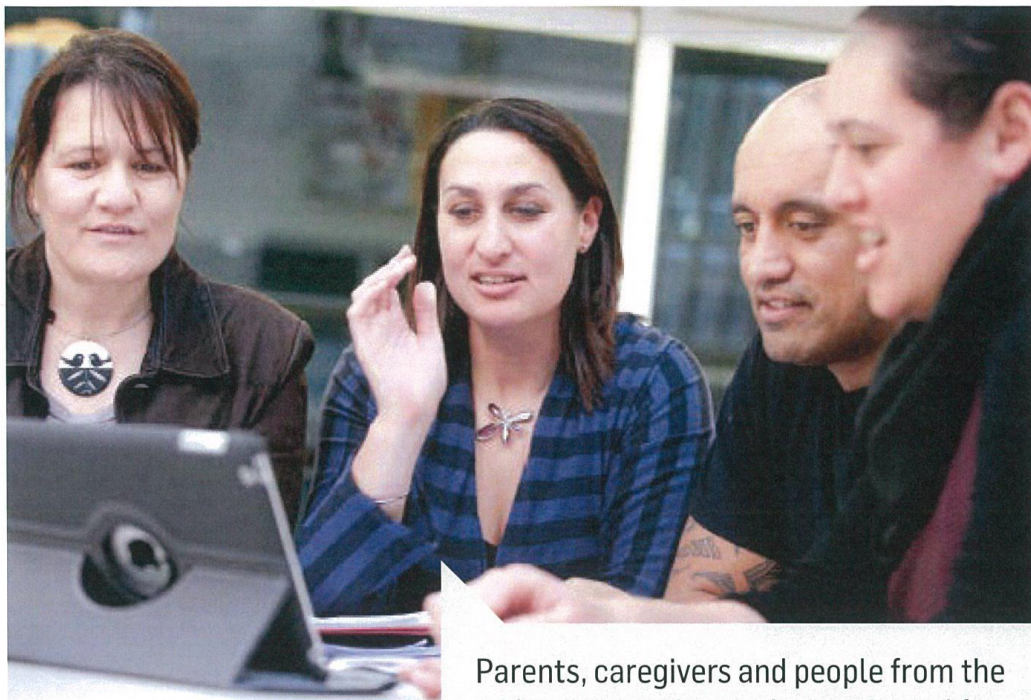
#### A board of trustees is made up of:

- 3–7 elected parent representatives
- the principal
- a staff representative
- a student representative (only in schools with students above year 9)
- proprietor's appointees (only in state integrated schools)
- co-opted trustees (boards must have more parent representatives than co-opted trustees)
- appointed trustees.

#### All trustees have:

- equal voice
- equal vote
- equal accountability
- equal standing





Parents, caregivers and people from the wider community can be nominated for election to a school | kura board.

### How is a board elected?

The school | kura staff and parents elect boards of trustees every three years. The trustee elections are the biggest democratic event in New Zealand. Schools and kura around the country seek approximately 12,000 parent representatives. All parents, legal guardians and immediate caregivers of students enrolled full-time in a state | state integrated school | kura can and should vote in the elections for parent representatives.

### What help do school trustees get?

New Zealand School Trustees Association provides free advice and support through their governance and employment advisory services and professional development workshops.

Visit the NZSTA website for more information: <http://www.nzsta.org.nz>

### How does the board of trustees work?

Boards of trustees provide strategic leadership and direction to their school | kura. The board works in partnership with the community, principal, teachers, support staff, and the government to ensure the best possible outcomes for all students. The importance of the partnership between a school | kura and its community cannot be stressed enough. Trustees represent their community and actively seek the input of parents, staff and students

For more details about how the board works view the online information at: <http://www.nzsta.org.nz>

### The board's strategic plan

The strategic plan outlines strategic direction and includes the vision, aims, objectives, directions, and targets of the board, and should be the basis for all school | kura decision making. The strategic plan is a binding agreement between the board of trustees and the Minister of Education. School communities should be encouraged to participate in its development and review.

**Boards of trustees provide strategic leadership and direction to their school | kura.**

## What are the roles within the board?

### Parent representatives

- represent the parent community. They do not necessarily need to be parents of current students at the school | kura, but must be nominated by someone who is on the school | kura's electoral roll
- ensure the best possible outcomes for all students at the school | kura

### Board chair

- cannot be the principal, staff | student representative
- leads the board
- chairs the meetings
- works closely with the principal to ensure seamless communication between governance and management

### Principal

- is a full member of the board
- is the educational professional leader of the school | kura
- is the CEO and the board's chief adviser

### Staff representative

- is elected by the staff (teaching and non-teaching)
- is not a staff advocate (they must make decisions in the best interests of all students at the school | kura using all the information available)

### Student representative

- is not a student advocate (they make decisions in the best interests of all students at the school | kura, using all the information available)

### Co-opted trustees

- provide the board with specific expertise – eg. finance, strategy, gender or ethnic balance

### Proprietor's appointees

- are appointed by the school's proprietors or by bodies corporate which have been approved by the board for this purpose

## What does the work of the board look like?

Boards of trustees' key areas of contribution are representation, leadership, accountability, and the employer role. For more details about what the work of the board looks like view the online information at <http://www.nzsta.org.nz>



### Accountability

Student progress and achievement, review, financial monitoring, resource management

### Leadership

Governance model, clear purpose, roles and responsibilities, effective meetings, relationships

### Employer role

Good employer, performance management system, effective relationships, health and safety, recruitment

### Representation

Community consultation and engagement, board consultation, trust and relationships

Trustees represent the community and benefit from the input of parents.

## How do the principal and board work together?

The board of trustees are the governors of the school | kura.

The principal is responsible for the management of the school | kura. The principal is a member of the board and acts as the board's educational leader and chief adviser.

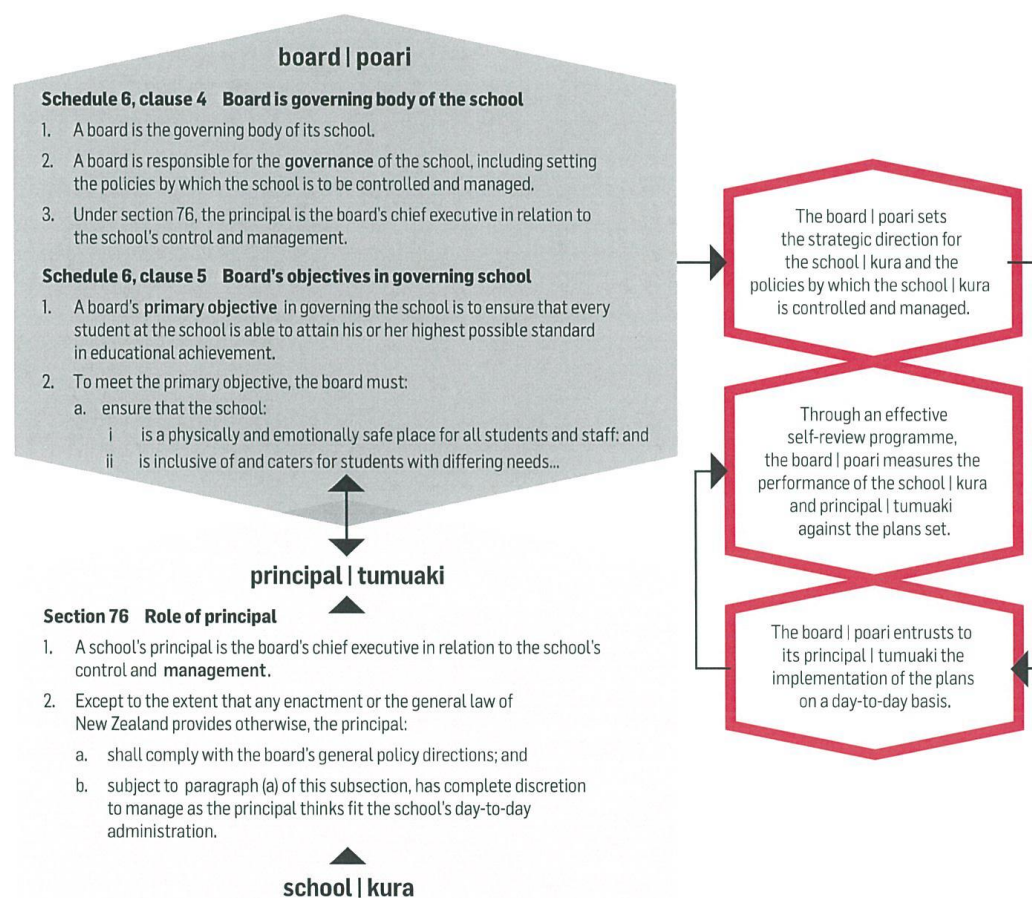
Governance and management work in partnership.

### Governance determines:

- the what - designing the future
- the ends - the outcomes to be achieved
- policies - statements of what is expected

### Management determines:

- the how - designing how to get there
- the means - strategies to achieve the ends
- procedures - steps to meet expectations





## What can parents expect from the board of trustees?

### Responsibility

The role of the board is to design the future of the school | kura and ensure that plans and targets are developed, monitored, and reviewed. The board develops policy by which the school | kura is to be controlled and managed.

The board receives regular reports from the principal about student learning and achievement and progress towards the school | kura's strategic aims and targets. The board uses this information to prioritise resourcing to meet the needs of students.

The Education Act s76 delegates responsibility for the day to day running of the school | kura to the principal – the school | kura management determines how policy/board expectations will be best met.

### Respect and integrity

Each board of trustees member is expected to make decisions in the best interests of all students at the school | kura and to ensure culturally appropriate processes are in place.

Board members are entrusted to govern the school | kura, on behalf of the community, to ensure the provision of a high quality learning environment for all.

### Consultation

The board's role is to design the future for the school | kura.

Board of trustees members are elected to represent the school or kura community.

Community consultation is a critical part of the process for developing and monitoring the board's strategic plan.

Consultation processes provide information to guide future development and give feedback on current progress towards the goals defined in the strategic plan.

The school | kura should have a procedure outlining the handling of concerns and complaints that is made available to the school | kura community.

Board of trustees members are not the immediate point of contact for parent concerns as these should first be dealt with by the school | kura, according to the school's | kura's procedure.

### Communication

The board of trustees should provide the school | kura community with regular updates on how the school | kura is performing in relation to the strategic goals.

### Professional learning

Board members are expected to have a clear understanding of:

- their role as trustees
- governance policy
- student learning and achievement data.
- NZSTA runs a comprehensive programme to support trustees in their role.

The board's primary focus is to ensure ongoing improvement in student achievement outcomes for all students.



## Frequently Asked Questions

### What information does the board have about my child?

The board's primary focus is to ensure ongoing improvement in student achievement outcomes for all students, therefore the board needs to examine student learning and achievement data in order to set targets and priorities. Individual students should not be identified in reports made to the board. However, the board will from time to time have access to information regarding individual students, for example concerns and complaints or for student behaviour management.

### What is the board's role in student behaviour management?

Serious issues of misconduct involve the board. If a student is suspended from school | kura, the board is required to hold a suspension meeting to decide the outcome. The student cannot return to school | kura until the board decides the outcome, or if the student is excluded or expelled.

For more information visit:

<http://parents.education.govt.nz/primary-school/your-child-atschool/standdowns-suspensions-exclusions-expulsions/>

### How do we know if our school | kura board is effective?

The strategic plan is the board's key policy document. It clearly outlines the strategic intent of the board. The board will undertake a process of community consultation as part of the development and review of the strategic plan. The school | kura will have copies of the strategic plan available for its community, usually on its website.

The Education Review Office (ERO) undertakes regular reviews of every school | kura in New Zealand. The board is ultimately responsible for the performance of their school | kura. Individual school | kura review reports can be found at [ero.govt.nz](http://ero.govt.nz).

### What happens if our board is ineffective?

If the ERO has concerns regarding the school | kura board, it will recommend additional board support and professional development or Ministry of Education intervention.

### What support do board members have?

Each board is responsible for ensuring that its members have the knowledge and understanding necessary for the board to be able to function effectively. NZSTA offers a comprehensive professional development programme to ensure that board members are informed and confident in their roles.

### Are board members paid?

Board members are paid an honorarium for attending board meetings. The amount is set by each board.

The IRD treats part of any honoraria paid to school trustees for attending board meetings as reimbursement of expenditure and, therefore, it is not subject to withholding tax as follows:

for the chairperson, the first \$75 per board meeting (up to a maximum of \$825 a year)

for any other board member, the first \$55 per board meeting (up to a maximum of \$605 a year).

### Who looks after the finances of the school?

The board is responsible for the finances of the school | kura.

The board approves a budget that allocates government and local

funding appropriately to develop a learning environment that meets the needs of all students. The budget aligns to school's | kura's annual priorities. The board monitors the school | kura budget at each board meeting.

The board must ensure that annual accounts are prepared which meet audit office requirements, and are then made available to the school | kura's auditor. These accounts form part of the school | kura's annual report.

### What knowledge and skills do I need to become a trustee?

Board members need to be committed to the school | kura with a vested interest in designing the future of the school | kura to ensure the success of all students. They need to clearly recognise the role of governance and be disciplined in carrying it out.

For more information visit:

<http://www.trustee-election.co.nz/media/191646/nzstadl6pp-fa.pdf>

### How much time do board members spend on board business?

The time commitment varies from board to board. Boards have regular meetings (usually at least 2 per term) that usually last for approximately 2 – 2.5 hours. Board members are sent all documentation prior to the meeting and are expected to have read this thoroughly prior to the meeting.

### Can the public attend board meetings?

Board meetings are meetings open to the public, but they are not public meetings. Speaking rights can be granted to non board members at the discretion of the board.

### What does "in committee" mean and why does the board have the right to use this?

When dealing with confidential issues, the board may go "into committee". Members of the public, including media, are not able to attend this part of the meeting unless they have been invited for a specific purpose – eg. their expert advisory skills in the employment area. This part of the meeting is called public excluded business.

### How can parents raise a concern with the board?

Each school | kura should have a policy/procedure outlining the process for handling concerns and complaints. Copies of this policy/procedure should be available from the school | kura.

### How do I become a trustee?

You can become a trustee by standing at the next board election, by standing when a casual vacancy arises, or by being appointed or co-opted. In the case of board elections, you need to be nominated by someone on the school | kura electoral roll.

You can also contact your local school | kura and inquire about any co-opted positions or proprietor appointee positions (for integrated schools) that may be available. For further information, go to <http://www.trusteeelection.co.nz/>

### What are communities of learning?

Communities of learning | Kāhui Ako is an initiative from the Government to group schools | kura into clusters. It will provide greater opportunity for schools | kura to collaborate, but each school | kura will still retain their own board.

For more information visit: <http://www.nzsta.org.nz/leadership/investing-in-educational-success-ies>



## 2019 Term Dates

- Term 1 Tuesday 29 January - Fri 12 April (106 half days – 11 weeks)
- Term 2 Monday 29 April - Friday 5 July (98 half days – 10 weeks)
- Term 3 Monday 22 July - Friday 27 September (100 half days – 10 weeks)
- Term 4 Monday 14 October -Thursday 12 December (80 half days – 9 weeks)

## 2019 Public Holidays

- Waitangi Day 6 February (Wednesday)
- Good Friday 19 April (Friday) during school holidays  
RGHS 60th Reunion
- Easter Monday 22 April (Monday) during school holidays
- Easter Tuesday 23 April (Tuesday) during school holidays
- Anzac Day 25 April (Wednesday) during school holidays
- Queen's Birthday 3 June (Monday)
- Labour Day 28 October (Monday)

---

## Wellness Centre Matters 2019

---

A huge warm welcome from the Wellness Centre Staff for 2019.

For those new to the school, the Wellness Centre is located down by the ARENA, and we are on board to assist both yourself and the staff with the total hauora of the students. The Wellness Centre is open from 8am until 3pm.

Full time we have the services of Elizabeth (Liz) Tai [etai@rghs.school.nz](mailto:etai@rghs.school.nz) ext 246 our Social Worker/Guidance and Shirley Tickelpenny [stickelpenny@rghs.school.nz](mailto:stickelpenny@rghs.school.nz) ext 245 our School Nurse and Wellness Centre Co-Ordinator.

Joining our staff we have Doctor's Clinics twice a week, Osteopath Clinic, Psychologist and Youth Worker Clinics and Addiction Counsellor Services. Referrals for these services are self referrals or family/whanau referrals or at times staff referrals so please feel free to make contact with us if you feel your daughter or ward would benefit from one of our providers seeing them.

We also welcome other agencies from the community in to see the students as requested. ie: Public Health and District Nurses

All year 9 students will also have an assessment done over the year for hearing, vision, and questions will be asked around their physical and mental wellbeing. We will ensure during this assessment that the students are enrolled with a dentist.

These assessments are carried out as part of a venture between the Ministries of Health and Education to ensure students are engaging in education and if there are any barriers to learning, they can be referred and rectified. This year Aneta Martin RN will be carrying out the assessments.

We will welcome the Mobile Dental Unit on site during 2019 and once again this team will work with us to assess students who are not enrolled with a local dentist.

All students who use Epipens for Allergies must have these in their bags for Athletics and Swimming Sports Days and all School trips. It would be good if they could also alert the School Nurse that they have them.

Just a friendly reminder, that when students are unwell, they need to present to the Wellness Centre where the Nurse will assess them and where necessary make contact with the caregivers to arrange their leaving school. Please do not arrange this or get students to access the Main Office Area. We are very easy to access via the Miro Street Entrance and we will have the student looking out for you to save you getting out of the car. This means that we are caring for the student until you can retrieve them and also make sure they are leaving with the correct personnel for the safety of both them and the school.

---

## *Upcoming Important Dates*

---

26 February	School Swimming Sports at Aquatic Centre
5 March	5.15pm: Board of Trustee Monthly Meeting
6 March	10.20am: 2019 Senior Leaders Investiture Assembly in ARENA
8 March	Six Week Reports online
13 March	5.30pm: Celebrating Academic Excellence Evening in PAC
15 March	Academic Planning Day #1 - Goal Setting and Six Week Reports
18 – 22 March	Summer Tournament Week
25 – 29 March	Year 9 Noho Marae Visits
1 – 5 April	Catch Up Week
2 April	5.15pm: Board of Trustee Monthly Meeting
12 April	End of Term 1; Te Mātārere #2 online
19 – 21 April	RGHS 60 <sup>th</sup> Reunion



Registered Charity No. CC21560

## Help build a bright future for Rotorua Girls High School ... now and forever!

**Thank you for choosing to support the Rotorua Girls High School Alumni Fund. Your donation will help build a bright future for the School - now and forever.**

Rotorua Girls High School has established an Alumni Fund with the Geyser Community Foundation. Donations made to the fund will be invested by Geyser and the capital retained forever. Income earned on the capital will be made available to the School for charitable purposes every year once the fund reaches a minimum of \$50,000. To donate go to the Alumni Fund tab on the home page of the RGHS website.

The annual income could be used in a number of ways including for the benefit of students such as providing assistance to school students who are in need or suffering genuine temporary or long-term financial hardship. Income could also be used to provide scholarships and prizes, providing or improving sporting and other facilities at the School or promoting public health.

In applying the income from the fund, the School will take the wishes of the donors into account.

### **Giving back to the community – a new solution**

The Geyser Community Foundation exists for the purpose of ensuring charitable gifts in the Rotorua and Taupo districts are managed as originally intended. Funds placed with the Foundation are invested and the capital retained in perpetuity. Every year the income earned on the capital is made available for charitable distribution.

This means that you keep giving forever and the total amount of the gift will, over time, far exceed the original capital donation. This is a very powerful way for individuals, families or organisations to provide long term benefits to their local community.

Find out more about the Geyser Community Foundation at [www.geysercf.org.nz](http://www.geysercf.org.nz)

Thank you.

Your donation will help build a bright future for  
Rotorua Girls High School – now and forever.



# Text My Lunch

Check Me in the Fridge

•CO.NZ




Go to

[www.txtmylunch.co.nz](http://www.txtmylunch.co.nz)

Enter your  
students number

→ Redeem lunch at any  
Champion Tuckshop

[www.libelle.co.nz](http://www.libelle.co.nz)

[www.txtmylunch.co.nz](http://www.txtmylunch.co.nz)

[flem.championtuckshops.nz](http://flem.championtuckshops.nz)



# Txt My Lunch

GO-NZ



Go to [www.txtmylunch.co.nz](http://www.txtmylunch.co.nz) → Enter your student's number → Redeem lunch at my Champion Tuckshop

## Crispy Chicken Roll Combo

w/milk, yoghurt & apple



## Italian Pasta Combo

w/milk, yoghurt & apple



## Cheeseburger Combo

w/water & apple



## \$2 Sandwich Range Combo

w/muffin, water & apple



## Teriyaki Chicken on Rice Combo

w/muffin & apple



## Butter Chicken on Rice Combo

w/water & apple



## Chicken Burger Combo

w/yoghurt & apple



## 6pc Dumpling Combo

w/water & apple



## \$3 Sandwich Range Combo

w/Grain Waves, muffin & apple



## Veggie Pocket Combo

w/milk & apple



## Pesto Pasta Combo

w/Grain Waves, yoghurt & apple



## Butter Chicken Wrap Combo

w/yoghurt & apple



## \$4 Sandwich Range Combo

w/milk & apple



## Sushi Sandwich Combo

w/water & apple



## 1/2 Wrap Combo

w/milk & apple



## Chilli Bean Wrap Combo

w/water & apple



[www.txtmylunch.co.nz](http://www.txtmylunch.co.nz)  
[www.libelle.co.nz](http://www.libelle.co.nz)  
[fb.com/championtuckshopsnz](http://fb.com/championtuckshopsnz)



### Year Level Deans Contact Details

If you have any major concerns, please contact your daughter's year level dean.

Year 9 Dean	Trish Pike	(07) 348 0156 ext 224	tpike@rghs.school.nz
Year 10 Dean	Jaylene Tamati	(07) 348 0156 ext 222	jtamati@rghs.school.nz
Year 11 Dean	Janaye Biddle-Kite	(07) 348 0156 ext 223	jbiddle@rghs.school.nz
Year 12 Dean	Ngaire Tepania	(07) 348 0156 ext 211	ntepania@rghs.school.nz
Year 13 Dean	Sarah Riley	(07) 348 0156 ext 221	sriley@rghs.school.nz
e-Vol Dean	Karen Aldridge	(07) 348 0156 ext 251	tpike@rghs.school.nz

### Senior Management Contact Details

Aramoana Mohi-Maxwell (07) 348 0156 ext 205 amohi@rghs.school.nz  
Deputy Principal for Years 9 and 10

Raewyn Krammer (07) 348 0156 ext 206 rkrammer@rghs.school.nz  
Deputy Principal for Years 11 and 12

Sarah Davis (07) 348 0156 ext 208 sdavis@rghs.school.nz  
Principal for Year 13

### Other Important Contact Details

Wai Morrison (07) 348 0156 ext 201 w Morrison@rghs.school.nz  
Head of Junior School

Shirley Tickelpenny (07) 348 0156 ext 245 stickelpenny@rghs.school.nz  
Wellness Centre Co-ordinator

Tina Sutherland (07) 348 0156 ext 234 tsutherland@rghs.school.nz  
Attendance Officer

Carol Holt (07) 348 0156 ext 259 cholt@rghs.school.nz  
Sports Co-ordinator

### REMINDERS FROM FRONT OFFICE

- that if a student is unwell they are to go to the Wellness Centre to get a leave pass not to just ring a parent and come to the Front Office.
- students will only be served before school, interval and lunch times.
- also NO lunch passes as we have a canteen on site.
- All accounts will be sent out this week.